

## S-Band Radar Transistor

The high power pulsed radar transistor device part number IB2226M80 is designed for S-Band radar systems operating over the instantaneous bandwidth of 2.25-2.55 GHz. While operating in class C mode this common base device supplies a minimum of 80 watts of peak pulse power under the conditions of 200 $\mu$ s pulse width and 10% duty cycle. All devices are 100% screened for large signal RF parameters, including power gain compression. Excellent spectral stability into output mismatch over a broad input power range make it ideal for use in reliable high power solid state transmitters.



PRELIMINARY DATA

PRELIMINARY DATA

PRELIMINARY DATA

Device	Freq (MHz)	P <sub>out</sub> (W)	P <sub>out +1</sub> (W)	I <sub>C</sub> (A)	RL (dB)	G (dB)	N <sub>C</sub> (%)	$\Delta$ G (dB)	Drp	VSWR	
										1.5:1	2.1
D1361-1	2250	87	102	3.74	9.2	9.64	61%	0.88	0.10	S	P
	2400	107	112	5.36	13	10.52	53%		0.45	S	P
	2550	91	95	4.93	9.2	9.80	48%		0.40	S	P

VCC=36V, Pulse=200 $\mu$ s, 10%

### Silicon Bipolar

- Ultra-high  $f_T$

### Class C Operation

- High Efficiency

### Common Base Configuration

- Single Power Supply

### Gold Metal

- Maximum Reliability

### Emitter Ballasting

- Optimum Thermal Distribution

### Internal Impedance Matching

- Ease of Use
- Ultra-low Loss Design

### BeO Package

- Unmatched Thermal Reliability

### RF Test Fixture

- Broadband
- Matched to 50 $\Omega$
- Long-term Correlation
- 100% Device RF Screening
- No External Tuning Allowed

### US Patent Number

- US 8344809B2

**MAXIMUM RATINGS**

Screen	Parameter	Symbol	Min	Max	Units	Test Conditions
BD	Collector-Emitter Voltage	$V_{CES}$	70	--	V	$I_C=20mA$ .
BD	Emitter-Base Voltage	$V_{EBO}$	3.0	--	V	$I_B=5Ma$ .
BD	Collector Current, Peak	$I_C$	--	7.75	A	$PW=PW1, DF=DF1$ .
BD	Continuous Power Dissipation, Peak	$P_D$	--	225	W	$PW=PW1, DF=DF1, T_F=25^{\circ}C$ .
BD	Operating Temperature	$T_{OP}$	-30	+50	$^{\circ}C$	$V_{CC}=tbd V, PW=200\mu s, DF=10\%, TF=30\pm 5^{\circ}C, PIN=13W, F=2.25-2.40-2.55GHz$ .
BD	Storage Temperature	$T_{STG}$	-65	+200	$^{\circ}C$	--

Note Screen 'BD' = parameter qualified By Design.

**THERMAL CHARACTERISTICS**

Screen	Parameter	Symbol	Min	Max	Units	Test Conditions
BD	Thermal Resistance	$R_{TH(JC)}$	1.0	tbd	$^{\circ}C/W$	$V_{CC}=tbd V, PW=200\mu s, DF=10\%, TF=30\pm 5^{\circ}C, PIN=13W, F=2.25-2.40-2.55GHz$ .

Note Screen 'BD' = parameter qualified By Design.

**PROCESSING SPECIFICATIONS**

Screen	Parameter	Symbol	Min	Max	Units	Test Conditions
100%	DC Wafer Probe	--	--	--	--	Per Integra specification.
Q1	Wafer DC and RF Qualification	--	--	--	--	Per Integra specification.
LM	Wire Bond Strength	--	--	--	--	Line monitor per Integra specification.
100%	Pre-cap visual inspection	--	--	--	--	Per Integra specification.
100%	Gross leak test	--	--	--	--	MIL-STD-750D, Method 1071.6, Test Condition C.

Note Screen 'Q1' = parameter is qualified by assembly and test of 3 pieces minimum per wafer.

Note Screen 'LM' = parameter is qualified by assembly line monitor.

**DC ELECTRICAL CHARACTERISTICS**

Screen	Parameter	Symbol	Min	Max	Units	Test Conditions
100%	Collector-Emitter Breakdown Voltage	$BV_{CES}$	70	--	V	$I_C=20mA$ .
100%	Zero Base Voltage Collector Leakage Current	$I_{CES}$	--	3.0	mA	$V_{CE}=30V$ .
100%	DC Current Gain	$H_{FE}$	10	100	--	$V_{CE}=5V, I_C=0.1A, T_F=25\pm 5^{\circ}C$ .

**RF ELECTRICAL CHARACTERISTICS**

Screen	Parameter	Symbol	Min	Max	Units	Test Conditions
100%	Input Return Loss	IRL	7.0	--	dB	Vcc=38 V, PW=200µs, DF=10%, TF=30±5°C, PIN=13W, F=2.25-2.40-2.55GHz.
100%	Output Power	P <sub>o</sub>	80	--	W	Vcc=38 V, PW=200µs, DF=10%, TF=30±5°C, PIN=13W, F=2.25-2.40-2.55GHz.
100%	Power Gain	G <sub>p</sub>	7.89	--	dB	Vcc=38 V, PW=200µs, DF=10%, TF=30±5°C, PIN=13W, F=2.25-2.40-2.55GHz.
100%	Collector Efficiency (P <sub>o</sub> /I <sub>c</sub> /V <sub>cc</sub> )	N <sub>c</sub>	38	--	%	Vcc=38 V, PW=200µs, DF=10%, TF=30±5°C, PIN=13W, F=2.25-2.40-2.55GHz.
100%	Pulse Amplitude Droop	D	--	0.7	dB	Vcc=38 V, PW=200µs, DF=10%, TF=30±5°C, PIN=13W, F=2.25-2.40-2.55GHz. Measure at 20 and 180µs.
100%	Gain Flatness	GF		1.3	dB	Vcc=38 V, PW=200µs, DF=10%, TF=30±5°C, PIN=13W, F=2.25-2.40-2.55GHz.
100%	Delta Insertion Phase Variation	d-IP	-30	+30	Deg	Vcc=38 V, PW=200µs, DF=10%, TF=30±5°C, PIN=13W, F=2.25-2.40-2.55GHz.
100%	Stability into 1.5:1	VSWR-S	--	--	--	Vcc=38 V, PW=200µs, DF=10%, TF=30±5°C, PIN=13W, F=2.25-2.40-2.55GHz. Rotate 1:5 output VSWR through 360° phase. No oscillatory or pulse break-up characteristics allowed on detected output pulse.
100%	+1dB Overdrive	OD	Stable	--	--	Vcc=38 V, PW=200µs, DF=10%, TF=30±5°C, PIN=16.4W
100%	2:1 Load Mismatch Tolerance	LMT	--	--	--	Vcc=38 V, PW=200µs, DF=10%, TF=30±5°C, PIN=13W, F=2.25-2.40-2.55GHz. Rotate 2:1 output VSWR through 360° phase. Survival.

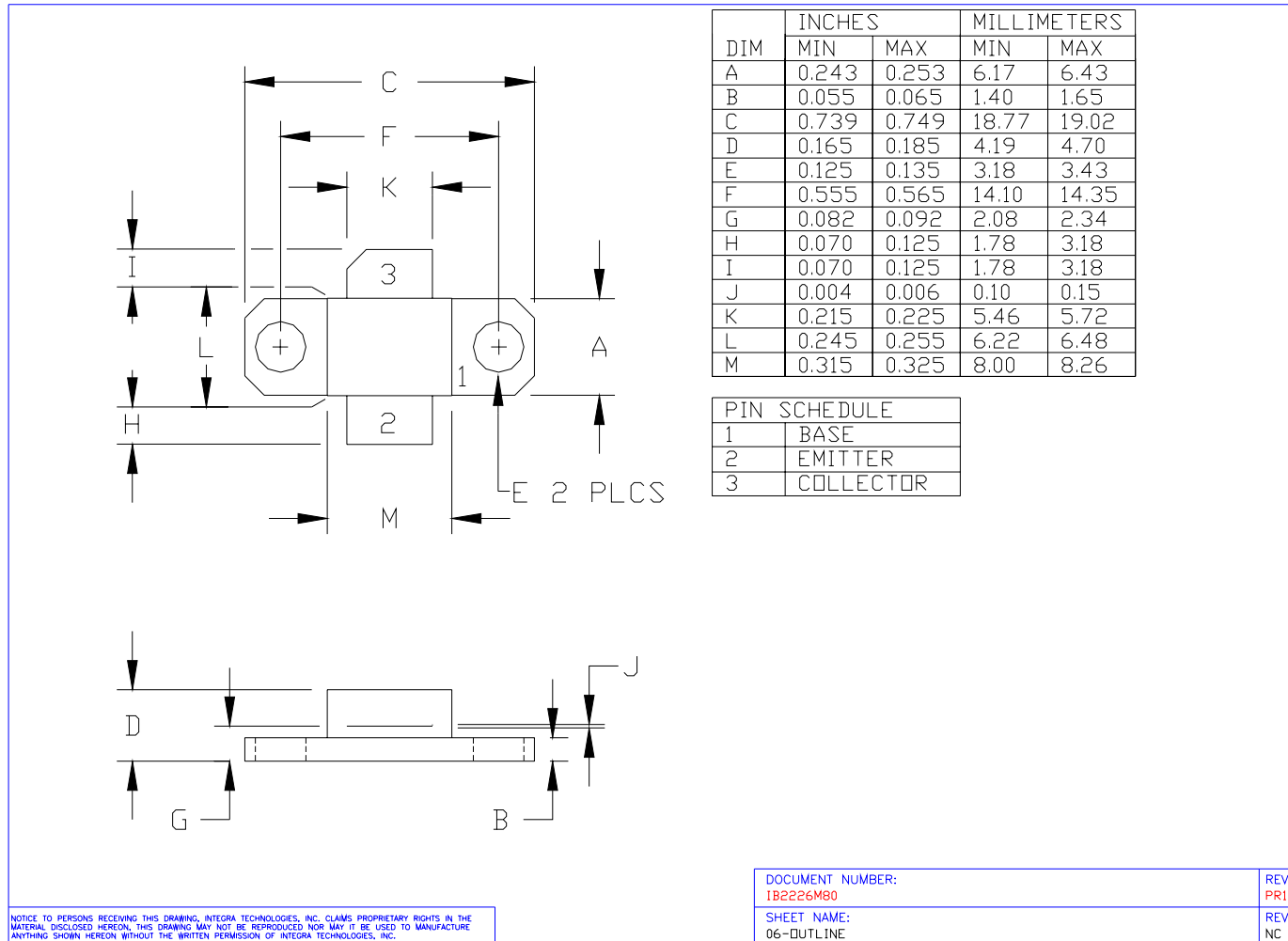
**RF TEST FIXTURE IMPEDANCE CHARACTERISTICS**

Frequency (MHz)	Z <sub>IF</sub> (Ω)	Z <sub>OF</sub> (Ω)
2.25	4.2-j7.1	5.7-j8.4
2.40	3.6-j5.9	5.0-j7.5
2.55	3.3-j4.5	4.7-j6.9

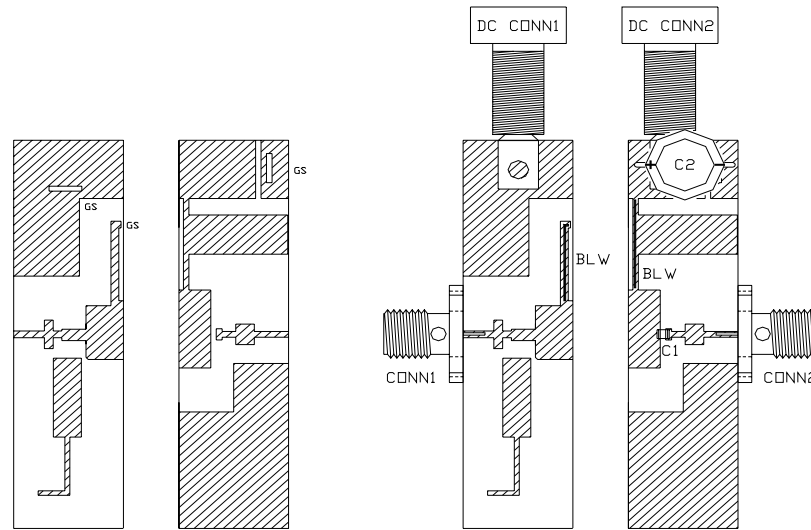
  

Impedance Definition		
----------------------	--	--

**PACKAGE DIMENSIONAL OUTLINE DRAWING**



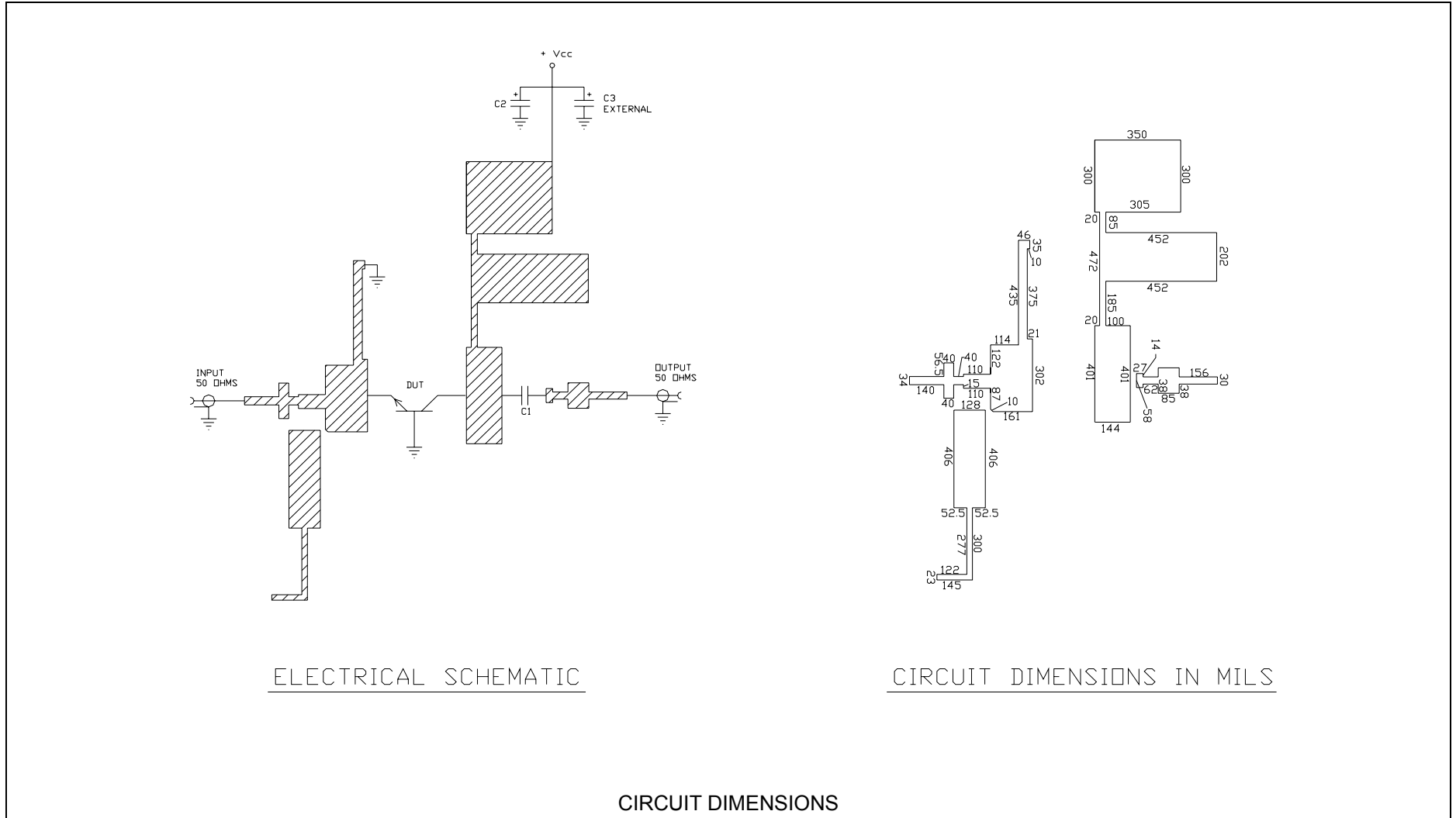
**BROADBAND RF TEST FIXTURE**



COMPONENT	DESCRIPTION
DUT	TRANSISTOR #IB2226M80, MOUNT HARD TO THE RIGHT
PC BOARD	ROGERS RT6010.2LM 1oz. Cu BOTH SIDES
C1	CHIP CAPACITOR, TYPE ATC100A, 39 pF
C2	ELECTROLYTIC CAPACITOR, 68uF / 63V
C3 - NOT SHOWN	ELECTROLYTIC CAPACITOR, 4700uF / 50V
GS	GROUND SHIM, COPPER, TH=0.001"
CONN1, CONN2	SMA CONNECTOR, TYPE DS #2052-5636-02
INPUT PC BOARD CARRIER	2 INCH BRASS - 01
OUTPUT PC BOARD CARRIER	2 INCH BRASS - 01
TRANSISTOR CARRIER	2 INCH COPPER - 01
TRANSISTOR CLAMP	NORYL CLAMP -01
HEATSINK	2 INCH HEATSINK - 09
DC CONN1	BANANA JACK, BLACK
DC CONN2	BANANA JACK, RED
BLW	BIAS LINE WIRE - COPPER - 0.022" DIA TYPICAL
NOTE	FIXTURE HARDWARE DRAWINGS AVAILABLE ON REQUEST

ASSEMBLY AND PARTS LIST

**RF TEST FIXTURE**



**DEFINITIONS**

<b>Data Sheet Status</b>	
Proposed Specification	This data sheet contains proposed specifications.
Preliminary Specification	This data sheet contains specifications based on preliminary measurements and data.
Product Specification	This data sheet contains final product specifications.
<b>Maximum Ratings</b>	
Stress above one or more of the maximum ratings may cause permanent damage to the device. These are maximum ratings only. Operation of the device at these or at any other conditions above those given in the characteristics sections of the specification is not implied. Exposure to maximum values for extended periods of time may affect device reliability.	

**WARNING**

<b>Product and environmental safety - toxic materials</b>
This product contains beryllium oxide. The product is entirely safe provided that the BeO base is not damaged. All persons who handle, use or dispose of this product should be aware of its nature and of the necessary safety precautions. After use, dispose of as chemical or special waste according to the regulations applying at the location of the user. It must never be thrown out with general or domestic waste.

**DISCLAIMER**

Integra Technologies Inc. reserves the right to make changes without further notice to any products herein. Integra Technologies Inc. makes no warranty, representation or guarantee regarding the suitability of its products for any particular purpose, nor does Integra Technologies Inc. assume any liability arising out of the application or use of any product or circuit, and specifically disclaims any and all liability, including without limitation consequential or incidental damages. Integra Technologies Inc. products are not designed for use in life support appliances, devices, or systems where malfunction of these products can reasonably be expected to result in personal injury. Integra Technologies Inc. customers using or selling these products for use in such applications do so at their own risk and agree to fully indemnify Integra Technologies Inc. for any damages resulting from such improper use or sale.
--