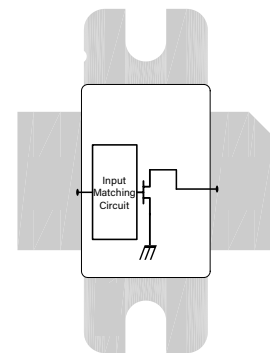


# L-Band, GaN/SiC, RF Power Transistor

1.2 - 1.4 GHz | 1000W typ | 63% Efficiency typ | 17 dB Gain typ | 50 V | 300µs Pulse Length, 10% Duty Cycle

IGN1214M900 and IGN1214M900S are high power GaN-on-SiC RF power transistors that have been designed to suit the unique needs of L band radar systems. They operate over the full 1.2 - 1.4 GHz frequency range. Under 300µs, 10% duty cycle pulse conditions, they supply a minimum of 900 W of peak output power, with typically >15.5 dB of gain and 60% efficiency. They operate from a 50 V supply voltage. For optimal thermal efficiency, the transistors are housed in a metal-based package with an epoxy-sealed ceramic lid.



## FEATURES

- GaN on SiC HEMT Technology
- Output Power >900W
- Pre-matched Input Impedance
- Exceptionally High Efficiency - up to 63%
- 100% RF Tested Under 300µs, 10% duty cycle pulse conditions
- RoHS and REACH Compliant
- IGN1214M900 has a bolt-down flange, IGN1214M900S is the earless flange option

## APPLICATIONS

- L-band Radar Systems

**Table 1. Absolute Maximum Ratings (Not Simultaneous)**

Parameter	Symbol	Value	Units	Test Conditions
DC Drain-Source Voltage	$V_{DS}$	150	V	25 °C
DC Gate-Source Voltage	$V_{GS}$	-8 to +1.0	V	25 °C
DC Drain Current	$I_D$	72	A	25 °C
DC Gate Current	$I_G$	7.2	mA	25 °C
RF Input Power	$P_{RF,IN}$	70	W	25 °C
Operating Channel Temperature	$T_J$	-55 to +225	°C	
Storage Temperature	$T_{STG}$	-55 to +150	°C	
Soldering Temperature	$T_{SOLDER}$	260 for 60s	°C	

Note: Operation outside the limits given in this table may cause permanent damage to the transistor

**Table 2. DC Electrical Characteristics (Case temperature = 25 °C unless otherwise stated)**

Parameter	Symbol	Min	Typ	Max	Units	Test Conditions
Gate Pinch-Off Voltage	$V_P$	-5.0			V	$V_{DS} = 50V, I_{DS} = 1mA$
Quiescent Gate Voltage	$V_Q$		-2.6		V	$V_{DS} = 50V, I_{DS} = 100mA$

**Table 3. RF Electrical Characteristics (Case temperature = 30 °C unless otherwise stated)**

Parameter	Symbol	Min	Typ	Max	Units	Test Conditions
Gain	G	14	15.5	19	dB	$P_{OUT} = 900W$ $f = 1.2, 1.3, 1.4 \text{ GHz}$ 300 $\mu$ s pulse length, 10% duty cycle $V_{DS} = 50V, I_{DS} = 100mA$
Drain Efficiency	$\eta$	50	60	80	%	
Pulse Droop	D	-0.6	-0.35	+0.2	dB	
Input Return Loss	IRL	8	16	18	dB	
Load Mismatch Stability	VSWR-S	2:1				
VSWR Withstand	VSWR-LMT	3:1				

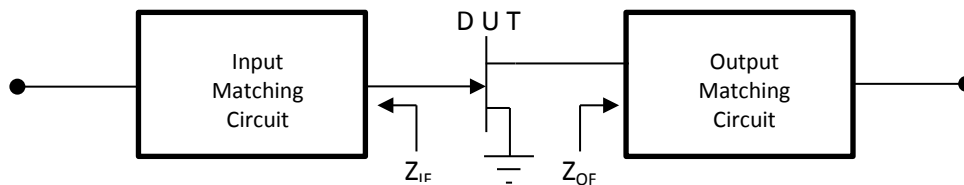
Note: Consult Integra Technologies Application Note 001 for information on how RF output power and pulse droop are measured.

**Table 4. Thermal Resistance (Case temperature = 85 °C unless otherwise stated)**

Parameter	Symbol	Typ	Test Conditions
Peak Thermal Resistance, Channel to Case	$R_{TH}$	0.15	$P_{DISS} = 600W$ 300 $\mu$ s pulse length, 10% duty cycle $V_{DS} = 50V$

**Table 5. Test Fixture Source & Load Impedances (Case temperature = 25 °C unless otherwise stated)**

Frequency (GHz)	$Z_{IF}$	$Z_{OF}$ Fundamental	Units	Test Conditions
1.2	1.3 - j 1.8	1.1 - j 0.1	$\Omega$	$P_{OUT} = 900W$ 300 $\mu$ s pulse length, 10% duty cycle $V_{DS} = 50V, I_{DS} = 100mA$
1.3	1.3 - j 1.2	0.9 + j 0.0	$\Omega$	
1.4	1.3 - j 0.6	0.6 + j 0.3	$\Omega$	



TYPICAL PERFORMANCE

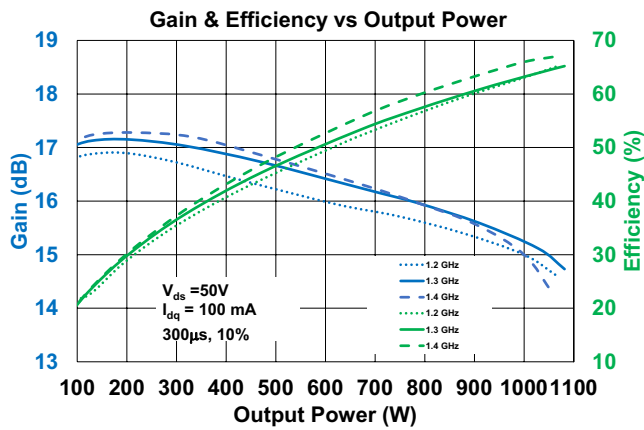


Figure 1

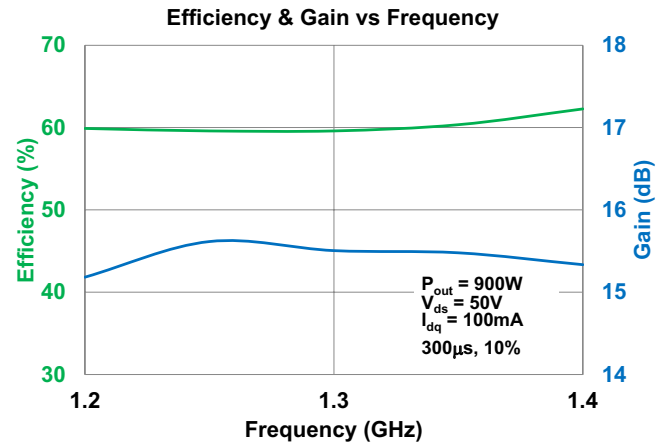


Figure 2

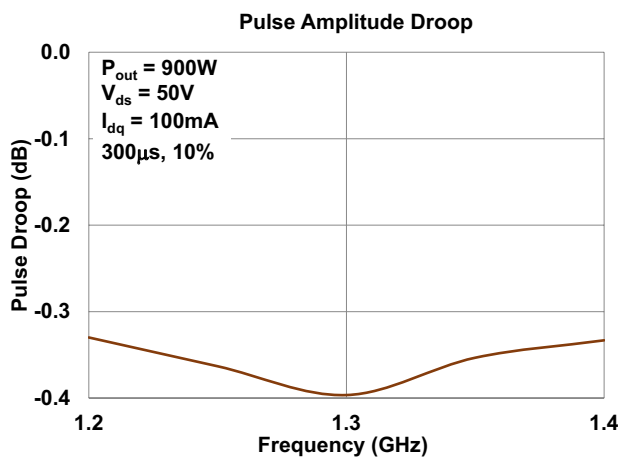


Figure 3

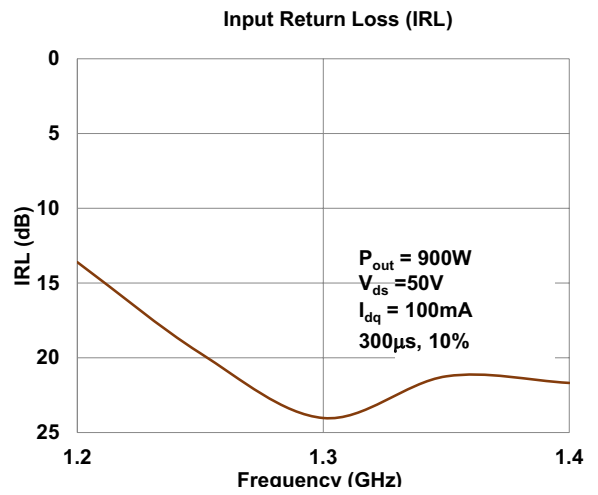
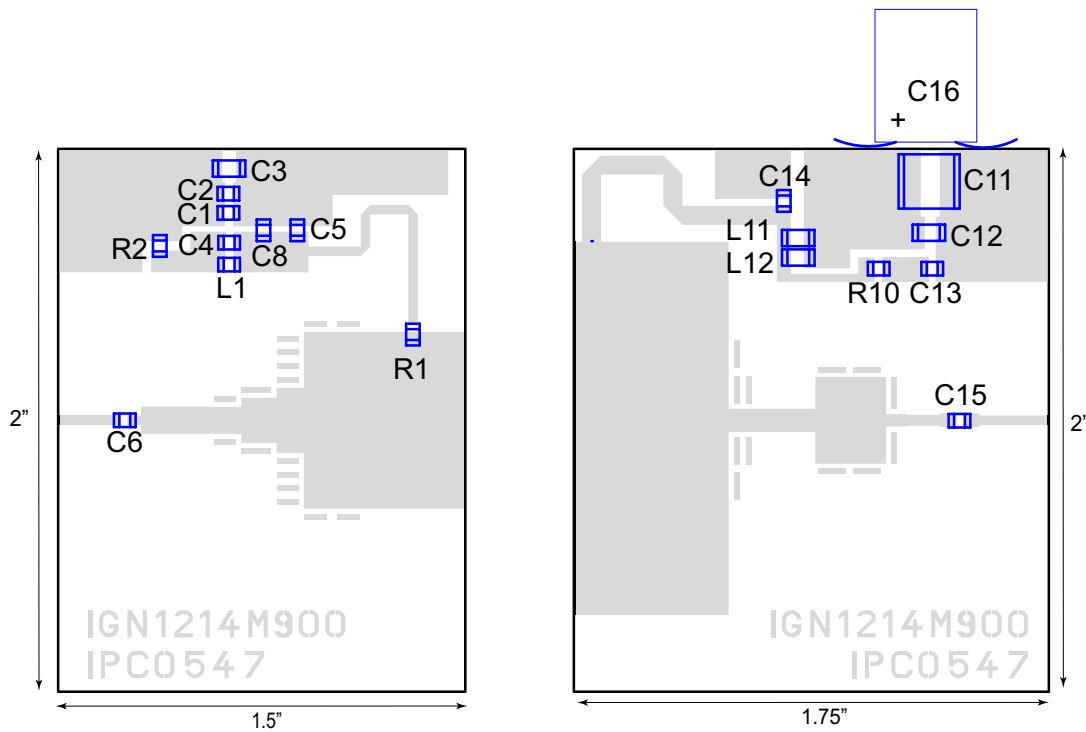


Figure 4

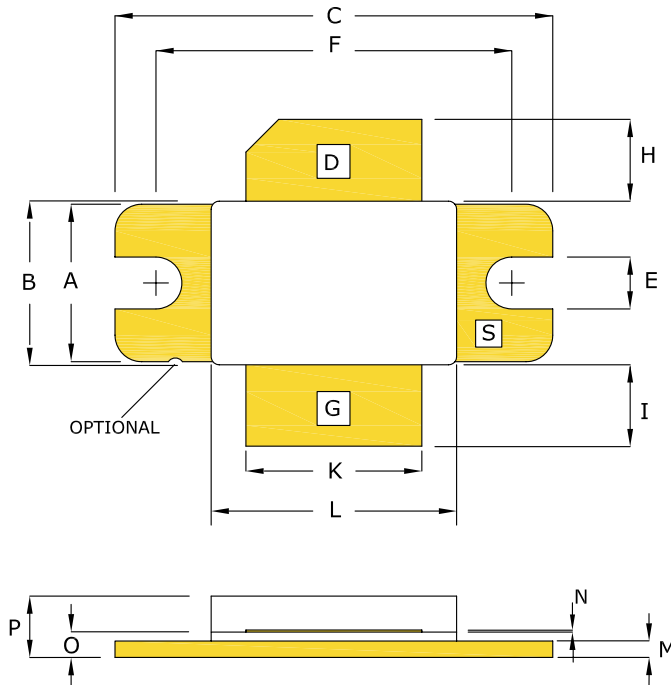
**TEST FIXTURE**



**Bill of Materials for IGN1214M900 Test Fixture**

Designator	Description	Part Number
C1, C4, C13	CAP 0.1 $\mu$ F, 0805, 50V	C0805C104K5RACTU
C2, C15	CAP 18pF	ATC600F180
C3, C12	CAP 1 $\mu$ F, 1206, 100V	C1206C105K5RACTU
C5, C6	CAP 18pF, Edge Mount	ATC600F180
C8	CAP 1000pF, 0805, 50V X7R	C08051A102J4T2A
C11	CAP 10 $\mu$ F, 2220, 100V, X7R	22201C106MAT2A
C14	CAP 100pF	ATC600F102
C16	CAP 68 $\mu$ F, 63V, Electrolytic	UPW1J680MPD
L1	IND FB, 120 OHM, 0805, 5A	ILHB0805ER121V
L11, L12	IND FB, 33 OHM, 1206, 6A	BLM31PG330SN1L
R1, R10	RES 10 OHM, 0805	ERJ-2GEJ75X
R2	RES 100 OHM, 0805	ERJ-2RKF1000X
PC Board Type	ROGERS RT6006 25mil, 1/1oz. Copper	

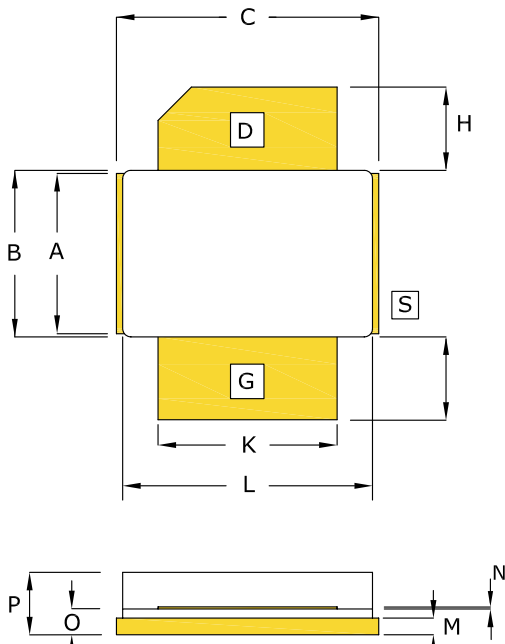
**PACKAGE PL64B1**



DIM	INCHES		MILLIMETERS	
	MIN	MAX	MIN	MAX
A	0.380	0.390	9.65	9.91
B	0.395	0.405	10.03	10.29
C	1.065	1.075	27.05	27.31
E	0.123	0.133	3.12	3.38
F	0.865	0.875	21.97	22.23
H	0.180	0.220	4.57	5.59
I	0.180	0.220	4.57	5.59
J	--	--	--	--
K	0.425	0.435	10.80	11.05
L	0.595	0.605	15.11	15.37
M	0.035	0.045	0.89	1.14
N	0.004	0.006	0.10	0.15
O	0.057	0.067	1.45	1.70
P	0.142	0.175	3.61	4.45

PIN SCHEDULE	
D	DRAIN
S	SOURCE
G	GATE

**BOLT-DOWN FLANGE OPTION  
IGN1214M900**



DIM	INCHES		MILLIMETERS	
	MIN	MAX	MIN	MAX
A	0.380	0.390	9.65	9.91
B	0.395	0.405	10.03	10.29
C	0.625	0.635	15.88	16.13
E	--	--	--	--
F	--	--	--	--
H	0.180	0.220	4.57	5.59
I	0.180	0.220	4.57	5.59
J	--	--	--	--
K	0.425	0.435	10.80	11.05
L	0.595	0.605	15.11	15.37
M	0.035	0.045	0.89	1.14
N	0.004	0.006	0.10	0.15
O	0.057	0.067	1.45	1.70
P	0.142	0.175	3.61	4.45

PIN SCHEDULE	
D	DRAIN
S	SOURCE
G	GATE

**EARLESS FLANGE OPTION  
IGN1214M900S**

### ESD & MSL Rating

Parameter	Rating	Standard
ESD Human Body Model (HBM)	TBD	ESDA/JEDEC JS-001-2012
ESD Charged Device Model (CDM)	TBD	JEDEC JESD22-C101F
Moisture Sensitivity Level (MSL)	Unlimited Shelf Life	IPC/JEDEC J-STD-020

### RoHS Compliance

Integra Technologies, Inc declares that its GaN and LDMOS Transistor Products comply with EU Directive 2011/65/EU on the restriction of the use of certain hazardous substances in electrical and electronic equipment (RoHS2), as adopted by EU member states on January 2, 2013 and amended on March 31, 2015 by EU Directive 2015/863/EU.

### REACH Compliance

Integra Technologies supports EU Regulation number 1907/2006 concerning the Registration, Evaluation, Authorization, and Restriction of Chemicals (REACH) as these apply to Integra semiconductor products, development tools, and shipping packaging.

In support of the REACH regulation, Integra will:

- Inform customers and recipients of Integra product if they contain any substances that are of very high concern (SVHC) per the European Chemical Agency (ECHA) website.
- Notify ECHA if any Integra product that contains any SVHCs which exceed guidelines for REACH chemicals by weight per part number and for total content weight per year for all products produced in or imported to the European market.
- Cease shipments of product containing REACH Annex XIV substances until authorization has been obtained.
- Cease shipment of product containing REACH Annex XVII chemicals when restrictions apply.

Integra has evaluated its materials, BOMs, and product specifications and product and has determined that this transistor conforms to all REACH and SVHC regulations and guidelines. Integra has implemented actions and control programs that will assure continued compliance.

### Disclaimer

Integra Technologies Inc. reserves the right to make changes without further notice to any products herein. Integra Technologies Inc. makes no warranty, representation or guarantee regarding the suitability of its products for any particular purpose, nor does Integra Technologies Inc. assume any liability arising out of the application or use of any product or circuit, and specifically disclaims any and all liability, including without limitation consequential or incidental damages. Integra Technologies Inc. products are not designed for use in life support appliances, devices, or systems where malfunction of these products can reasonably be expected to result in personal injury. Integra Technologies Inc. customers using or selling these products for use in such applications do so at their own risk and agree to fully indemnify Integra Technologies Inc. for any damages resulting from such improper use or sale.

#### DEFINITIONS:

#### DATA SHEET STATUS

Advanced Specification - This data sheet contains Advanced specifications.

Preliminary Specification - This data sheet contains specifications based on preliminary measurements and data.

Final Specification - This data sheet contains final product specifications.

**MAXIMUM RATINGS** Stress above one or more of the maximum ratings may cause permanent damage to the device. These are maximum ratings only operation of the device at these or at any other conditions above those given in the characteristics sections of the specification is not implied. Exposure to maximum values for extended periods of time may affect device reliability.

Integra Technologies, 321 Coral Circle, El Segundo, CA 90245-4620 | Phone: 310-606-0855 | Fax: 310-606-0865