

RF Power LDMOS FET

The high power transistor part number ILD0909M1000A is designed for systems operating at 915 MHz. Operating at 60 μ s, 1% pulse conditions this LDMOS FET device supplies a minimum of 1000 watts of power at 915 MHz. All devices are 100% screened for large signal RF parameters.



Silicon LDMOS FET

- High Power Gain
- Superior thermal stability

Class AB Operation

- Gate biased to $I_{DQ} = 60$ mA

Configuration

- Common Source

Gold Metal

- Maximum Reliability

Package

- Thermally enhanced
- Pb-free and RoHS-compliant

Epoxy Sealed Lid

- Gross Leak Qualified

RF Test Fixture

- Broadband
- Matched to 50 ohms
- Long-term Correlation
- 100% Device RF Screening
- No External Tuning required

PRELIMINARY DATA

PRELIMINARY DATA

PRELIMINARY DATA

Lot/SN	F (MHz)	Pi (W)	Id (A)	RL (dB)	Po (W)	Nd' (%)	G (dB)	VSWR 2:1	Droop (dB)
50020346-3	915	30	47.7	18	1086	52.1	15.59	S	-0.14

Pulse format = 60 μ s, 1%, $I_{DQ} = 60$ mA, $V_d = 50$ V

MAXIMUM RATINGS

Screen	Parameter	Symbol	Min	Max	Units	Test Conditions
BD	Drain-Source Voltage	V_{DS}	--	92	V	--
BD	Gate-Source Voltage	V_{GS}	--	20	V	--
BD	Storage Temperature Range	T_{STG}	-55	+200	°C	--
BD	Operating Junction Temperature Range	T_J	-55	+200	°C	--
Note	Screen 'BD' = parameter qualified By Design.					

THERMAL CHARACTERISTICS

Screen	Parameter	Symbol	Min	Max	Units	Test Conditions
BD	Thermal Resistance	$R_{TH(JC)}$	--	0.02	°C/W	$V_D=50V, I_{DQ}=60mA, T_F=25\pm 5^\circ C, P_{OUT}=1000W$
Note	Screen 'BD' = parameter qualified By Design.					

PROCESSING SPECIFICATIONS

Screen	Parameter	Symbol	Min	Max	Units	Test Conditions
100%	DC Wafer Probe	--	--	--	--	Per Integra specification.
Q1	Wafer DC and RF Qualification	--	--	--	--	Per Integra specification.
LM	Wire Bond Strength	--	--	--	--	Line monitor per Integra specification.
100%	Pre-cap visual inspection	--	--	--	--	Per Integra specification
100%	Gross leak test	--	--	--	--	MIL-STD-750D, Method 1071, Test Condition C
Note	Screen 'Q1' = parameter is qualified by assembly and test of 3 pieces minimum per wafer.					
Note	Screen 'LM' = parameter is qualified by assembly line monitor.					

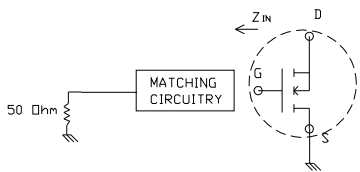
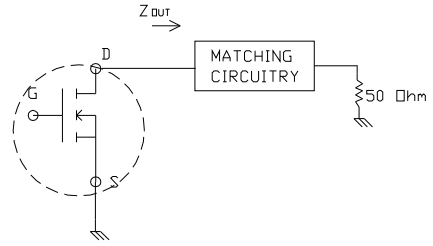
DC ELECTRICAL CHARACTERISTICS

Screen	Parameter	Symbol	Min	Max	Units	Test Conditions
100%	Drain-Source Breakdown Voltage	BV_{DSS}	92	--	V	$I_D = 70mA, V_{GS} = 0V, T_F = 25\pm 5^\circ C$
100%	Drain Leakage Current	I_{DSS}	--	48	μA	$V_{DS} = 50V, V_{GS} = 0V, T_F = 25\pm 5^\circ C$
100%	Gate Threshold Voltage	V_{GSTH2}	2.75	4.75	V	$I_D = 100mA, V_{DS} = 5V, T_F = 25\pm 5^\circ C$
100%	Gate Leakage Current	I_{GSS}	--	1	μA	$V_{GS} = 5V, V_{DS} = 0V, T_F = 25\pm 5^\circ C$

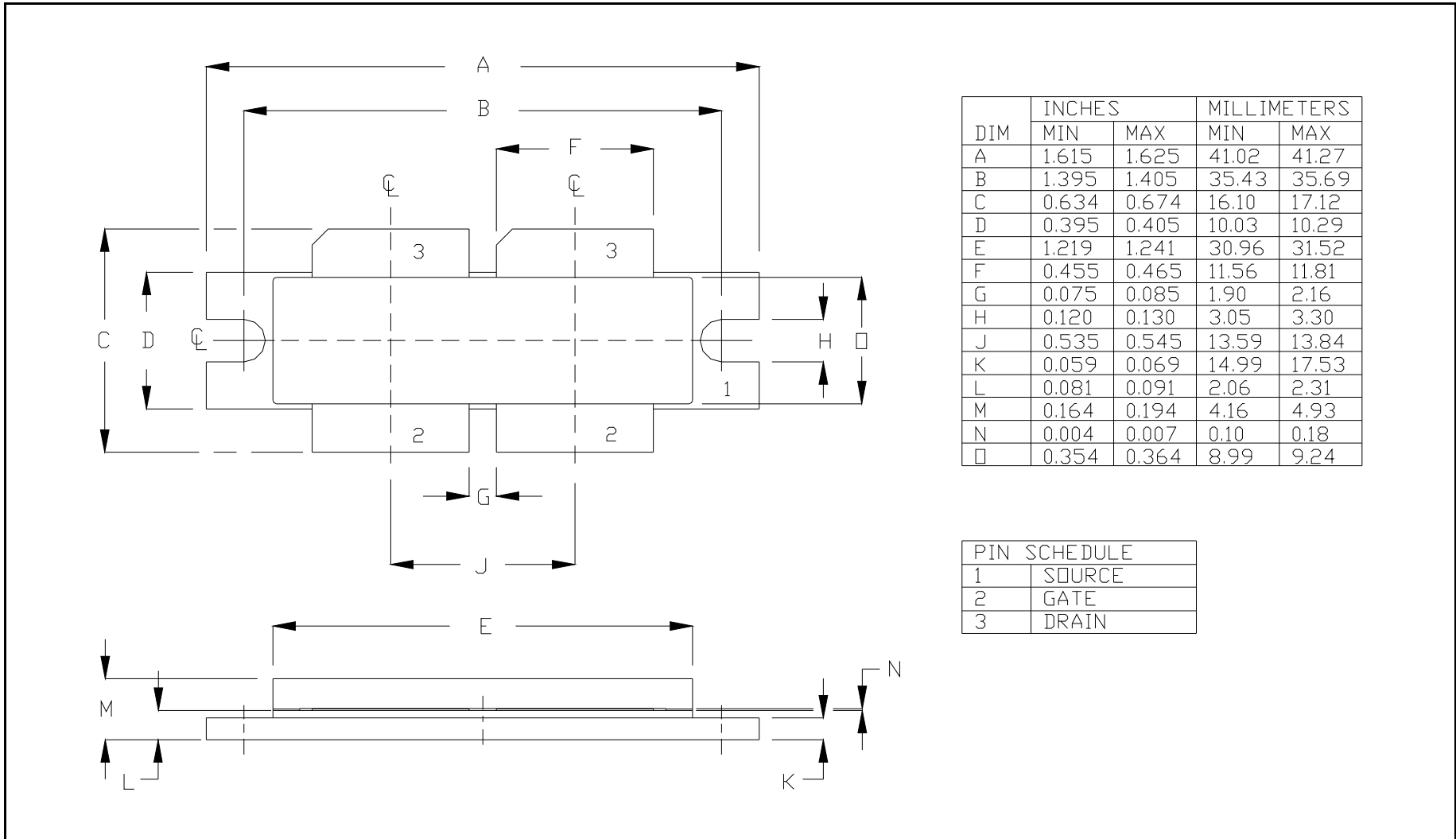
RF ELECTRICAL CHARACTERISTICS

Screen	Parameter	Symbol	Min	Max	Units	Test Conditions
100%	Input Return Loss	IRL	10	--	dB	$V_{DD}=50V$, $P_{in}=30W$, Pulse=50 μ s, 2%, $T_F=25\pm 5^\circ C$, $F=F1$, $I_{DQ}=60mA$.
BD	Maximum Overdrive	$P_{IN(MAX)}$	--	45	W	$V_{DD}=50V$, Pulse=50 μ s, 2%, $T_F=25\pm 5^\circ C$, $F=F1$, $I_{DQ}=60mA$.
100%	Power Gain	G_P	15.23	16.73	dB	$V_{DD}=50V$, $P_{in}=30W$, Pulse= Note 2, $T_F=25\pm 5^\circ C$, $F=F1$, $I_{DQ}=60mA$.
100%	Output Power	P_{out}	1000	1413	W	$V_{DD}=50V$, $P_{in}=30W$, Pulse= Note 2, $T_F=25\pm 5^\circ C$, $F=F1$, $I_{DQ}=60mA$.
100%	Drain Efficiency	η'_d	42		%	$V_{DD}=50V$, $P_{in}=30W$, Pulse= Note 2, $T_F=25\pm 5^\circ C$, $F=F1$, $I_{DQ}=60mA$.
100%	Pulse Amplitude Droop	D	-0.5	+0.5	dB	$V_{DD}=50V$, $P_{in}=30W$, Pulse= Note 2, $T_F=25\pm 5^\circ C$, $F=F1$, $I_{DQ}=60mA$.
100%	Stability into 2:1 VSWR	VSWR-S	--	2:1	--	$V_{DD}=50V$, $P_{in}=30W$, Pulse= Note 2, $T_F=25\pm 5^\circ C$, $F=F1$, $I_{DQ}=60mA$. Rotate 2:1 output VSWR through 360° phase. No oscillatory or pulse break-up characteristics allowed on detected output pulse.
BD	Load Mismatch Tolerance	LMT	--	20:1	--	$V_{DD}=50V$, $P_{in}=30W$, Pulse= Note 2, $T_F=25\pm 5^\circ C$, $F=F1$, $I_{DQ}=60mA$. Rotate 20:1 output VSWR through 360° phase. Survival.
BD	Pulse Risetime	RT	--	60	ns	$V_{DD}=50V$, $P_{in}=30W$, Pulse= Note 2, $T_F=25\pm 5^\circ C$, $F=F1$, $I_{DQ}=60mA$. Measure between 10% and 90% detected power points.
Note 1	F1 = 915MHz.					
Note 2	Pulse format = 60 μ s, 1%					
Note 3	T_F = Device flange temperature.					
Note 4	Screen 'BD' = parameter qualified By Design.					

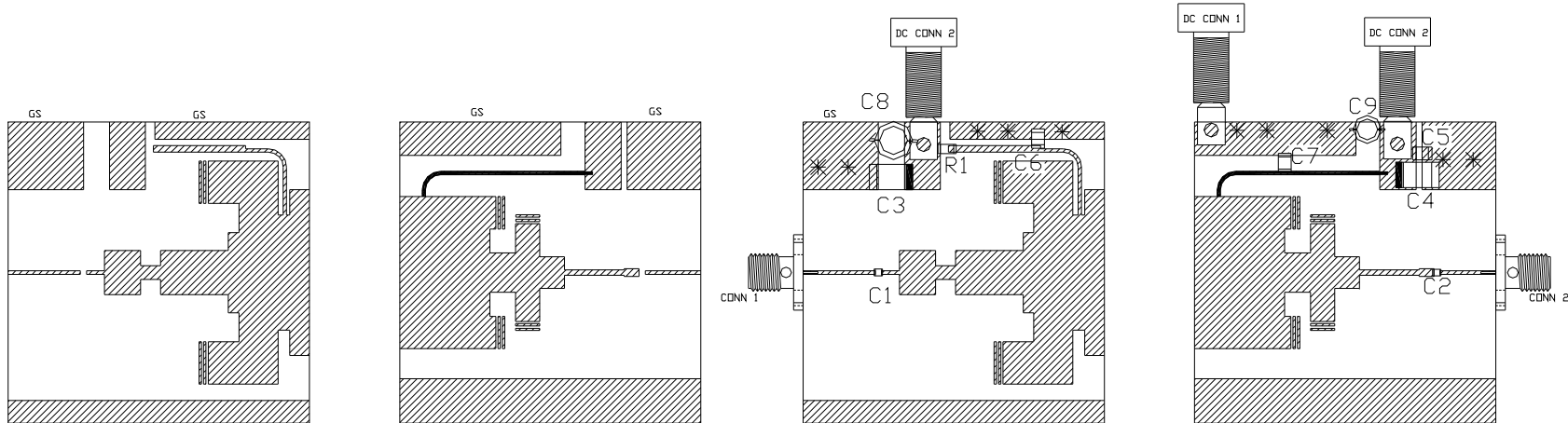
RF TEST FIXTURE IMPEDANCE CHARACTERISTICS

Frequency (MHz)	Z_{IF} (Ω)	Z_{OF} (Ω)
915	$0.65 + j1.16$	$0.51 + j0.60$
Impedance Definition		

PACKAGE DIMENSIONAL OUTLINE DRAWING



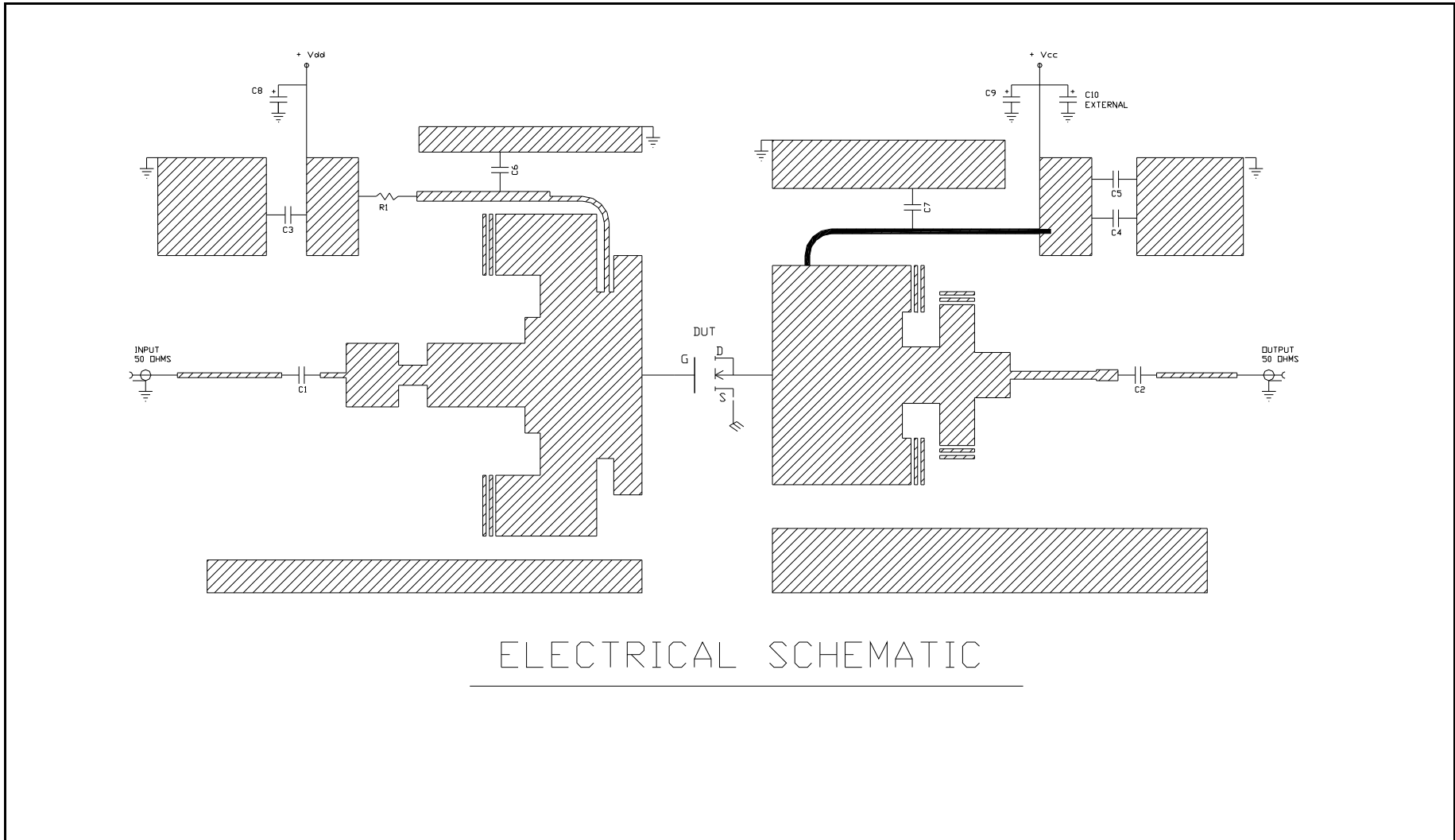
RF TEST FIXTURE – ASSEMBLY AND PARTS LIST



COMPONENT	DESCRIPTION
DUT	TRANSISTOR #ILD0909M1000A MOUNT HARD TO THE RIGHT
PC BOARD	ROGERS HR0 3010 10.2 025" 1oz Cu
C1, C2	CHIP CAPACITOR ATC100A - 39 pF
C3, C4	CHIP CAPACITOR AVX 4.7uF, 50V ESR = 0.3ohms
C5	CHIP CAPACITOR ATC100B - 1000pF 250V
C6, C7	CHIP CAPACITOR ATC100B - 47 pF
C8, C9	CHIP CAPACITOR ATC100B - 68uF / 63V
C10 (NOT SHOWN)	USE CORNELL DUBILIER ALUMINUM FLAT PACK "MLP" SERIES OR SIMILAR FOR STORAGE CAPACITOR
R1	RESISTOR 1206 - 300 ohms
GS (10 PLACES)	GROUND SHIM, COPPER, TH=0.001"
CONN 1, CONN 2	SMA CONNECTOR, DS #2052-5636-02
INPUT PC BOARD CARRIER	2 INCH BRASS -07 (20")
OUTPUT PC BOARD CARRIER	2 INCH BRASS -07 (20")
TRANSISTOR CARRIER	2 INCH COPPER -27
TRANSISTOR CLAMP	NURYL CLAMP-09
ALUMINUM HEAT SINK	2 INCH HEATSINK-11
DC CONN 1	BANANA JACK, BLACK
DC CONN 2	BANANA JACK, RED
NOTE	FIXTURE HARDWARE DRAWINGS AVAILABLE ON REQUEST

ASSEMBLY AND PART LIST

RF TEST FIXTURE – ELECTRICAL SCHEMATIC



DEFINITIONS

Data Sheet Status	
Proposed Specification	This data sheet contains proposed specifications.
Preliminary Specification	This data sheet contains specifications based on preliminary measurements and data.
Product Specification	This data sheet contains final product specifications.
Maximum Ratings	
Stress above one or more of the maximum ratings may cause permanent damage to the device. These are maximum ratings only. Operation of the device at these or at any other conditions above those given in the characteristics sections of the specification is not implied. Exposure to maximum values for extended periods of time may affect device reliability.	

DISCLAIMER

Integra Technologies Inc. reserves the right to make changes without further notice to any products herein. Integra Technologies Inc. makes no warranty, representation or guarantee regarding the suitability of its products for any particular purpose, nor does Integra Technologies Inc. assume any liability arising out of the application or use of any product or circuit, and specifically disclaims any and all liability, including without limitation consequential or incidental damages. Integra Technologies Inc. products are not designed for use in life support appliances, devices, or systems where malfunction of these products can reasonably be expected to result in personal injury. Integra Technologies Inc. customers using or selling these products for use in such applications do so at their own risk and agree to fully indemnify Integra Technologies Inc. for any damages resulting from such improper use or sale.